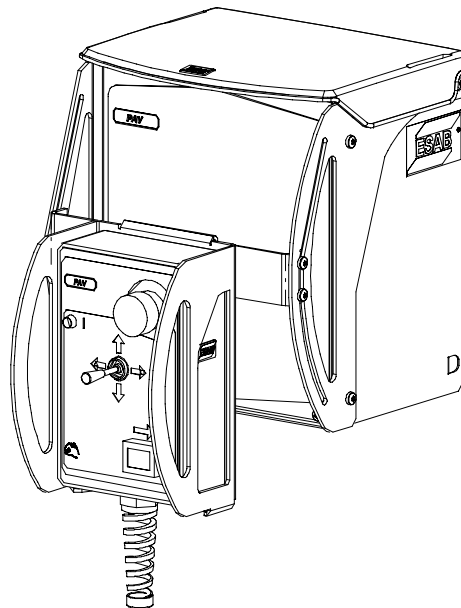
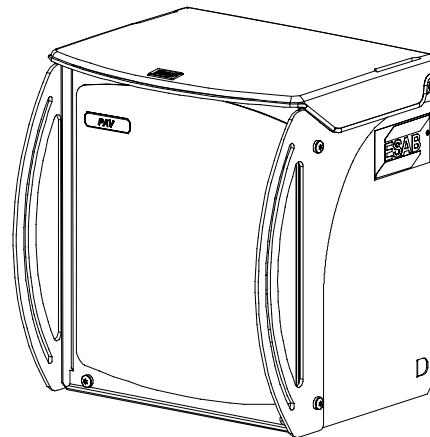
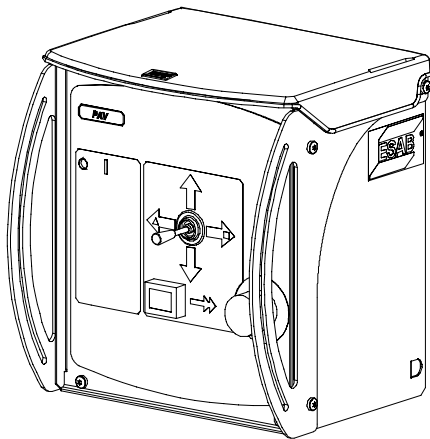


PAV



**Bruksanvisning
Brugsanvisning
Bruksanvisning
Käyttöohjeet
Instruction manual
Betriebsanweisung
Manuel d'instructions
Gebruiksaanwijzing
Instrucciones de uso
Istruzioni per l'uso**

**Manual de instruções
Οδηγίες χρήσεως
Instrukcja obsługi
Kezelési utasítások
Návod k používání
Navod na pouitje
Lietošanas pamācība
Eksploataavimo instrukcijos
Priručnik s uputama
Manualul de instrucțiuni**

SVENSKA	5
DANSK	17
NORSK	29
SUOMI	41
ENGLISH	53
DEUTSCH	65
FRANÇAIS	77
NEDERLANDS	89
ESPAÑOL	101
ITALIANO	113
PORTUGUÊS	125
ΕΛΛΗΝΙΚΑ	137
POLSKI	150
MAGYAR	163
ČESKY	175
SLOVENSKY	188
LATVIEŠU	201
LIETUVIŪK	213
HRVATSKI	225
Rumanian	237

Rätt till ändring av specifikationer utan avisering förbehålles.
Ret til ændring af specifikationer uden varsel forbeholdes.
Rett til å endre spesifikasjoner uten varsel forbeholdes.
Oikeudet muutoksiin pidätetään.
Rights reserved to alter specifications without notice.
Änderungen vorbehalten.
Sous réserve de modifications sans avis préalable.
Recht op wijzigingen zonder voorafgaande mededeling voorbehouden.
Reservado el derecho de cambiar las especificaciones sin previo aviso.
Ci riserviamo il diritto di variare le specifiche senza preavviso.
Reservamo-nos o direito de alterar as especificações sem aviso prévio.
Διατηρείται το δικαίωμα τροποποίησης προδιαγραφών χωρίς προειδοποίηση.
Zastrzegamy sobie prawo do wprowadzenia zmian.
Fenntartjuk az előzetes bejelentés nélküli változtatás jogát.
Výrobce si vyhrazuje právo na změnu údajů bez předcházejícího upozornění.
Výrobca si vyhradzuje právo na uskutočnenie zmien bez upovedomenia.
Tiek paturētas tiesības bez iepriekšēja brīdinājuma izmainīt specifikācijas.
Ipmone passileka teise keisti specifikācijas be ispjimo.
Rights reserved to alter specifications without notice.
Rights reserved to alter specifications without notice.

Enheten är provad av ESAB i en allmän inkoppling.
Ansvaret för den slutliga inkopplingens säkerhet och funktion åligger Intergratören.

Enheden er testet af ESAB i en generel forbindelse.
Ansvaret for den endelige forbindelses sikkerhed og funktion påhviler integratoren.

Enheten er testet av ESAB i en generell tilkobling. Den som integrerer systemet, har ansvaret for sikkerheten og funksjonen ved den endelige tilkoblingen.

ESAB on koekäyttänyt yksikön yleisessä sähköliitännässä.
Vastuu lopullisen kytkennän turvallisuudesta ja toimimisesta on integraattorilla.

The unit is tested by ESAB in a general purpose operation.
Responsibility for the safety and function of the final operation remains with the Integrator.

Die Einheit wurde von ESAB in einer allgemeinen Schaltung geprüft.
Die Verantwortung für die Sicherheit und Funktion der letztendlichen Schaltung liegt beim Integrator.

L'unité est testée par ESAB sur un raccordement général.
L'Intégrateur est le seul responsable de la sécurité et du fonctionnement du raccordement définitif.

De eenheid werd door ESAB getest in een algemene schakeling.
Diegene die de uiteindelijke schakeling uitvoert is aansprakelijk voor de veiligheid en werking ervan.

La unidad ha sido probada por ESAB en una conexión general.
La seguridad y la funcionalidad de la conexión final son responsabilidad del Integrador.

L'unità è stata testata da ESAB in un impianto generico.
La sicurezza e il funzionamento dell'impianto finale sono di responsabilità dell'installatore.

A unidade foi testada pela ESAB numa ligação de carácter geral.
O integrador é responsável pela segurança da ligação final e pelo funcionamento.

Η μονάδα είναι δοκιμασμένη από την ESAB σε με κοινή σύνδεση.
Η ευθύνη για την ασφάλεια και λειτουργία της τελικής σύνδεσης είναι του ολοκληρωτή.

Jednostka została przetestowana przez firmę ESAB dla ogólnej konfiguracji podłączenia.
Za bezpieczeństwo i działanie końcowej konfiguracji podłączenia odpowiada Wykonawca.

Az egység az ESAB cégnél egy általános célú művelet során kipróbálásra került.
A végső működés során a biztonságért és a működésért az integrátor felel.

Společnost ESAB jednotku testuje v obecném provozu.
Odpovědnost za bezpečnost a funkčnost konečného provozu nese osoba, která provedla zabudování.

Jednotka je testovaná vo všeobecnej prevádzke spoločnosťou ESAB.
Za bezpečnosť a funkčnosť konečnej prevádzky stále zodpovedá integrátor.

Iekārta ir ESAB pārbaudīta vispusīgas ekspluatācijas apstākļos.
Par galaizmantošanas drošību un darbību atbildīgs ir integrators.

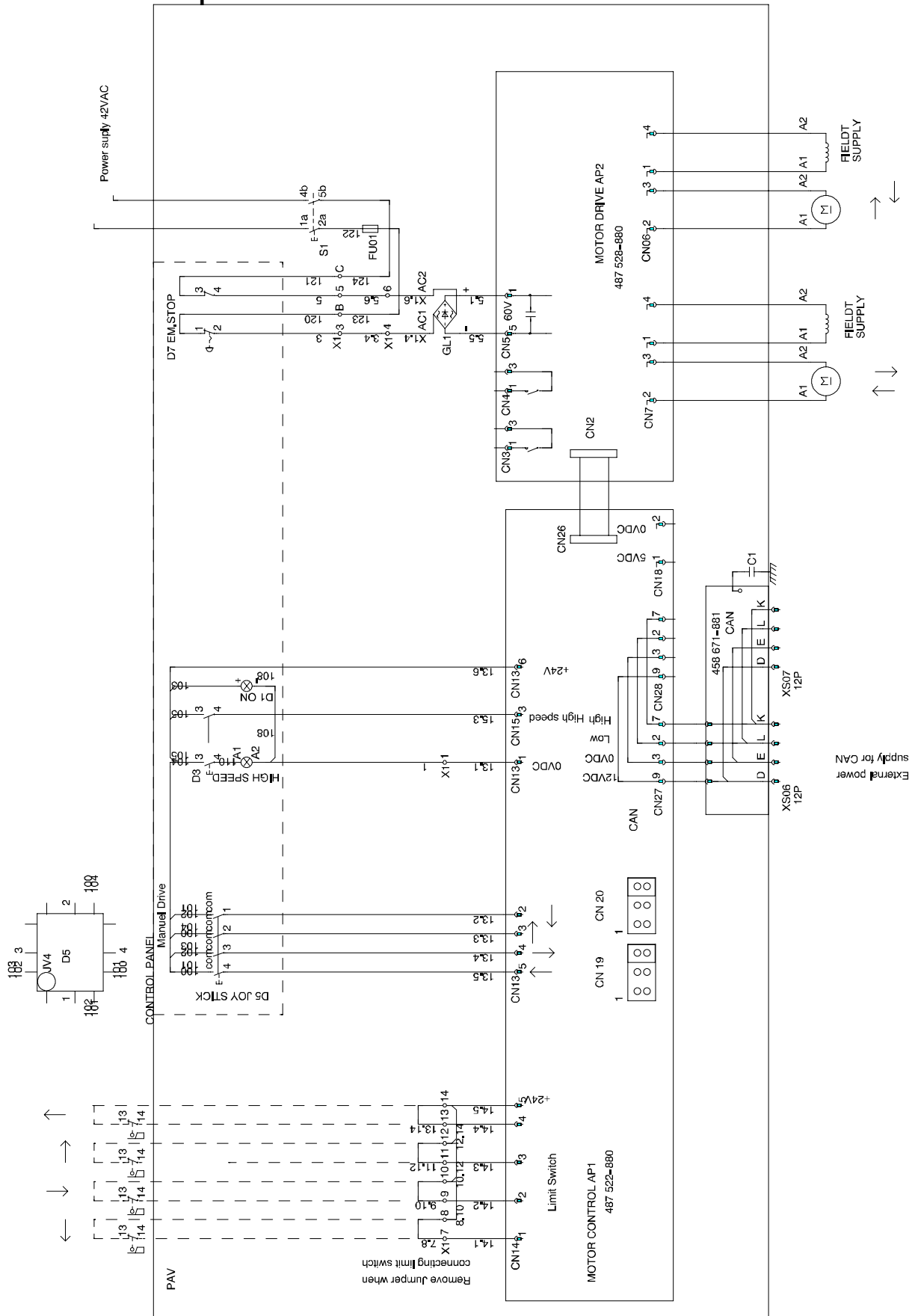
Įrenginio veikimas naudojant jį pagal benraįą paskirtį patikrintas ESAB.
Už įrenginio galutinio veikimo saugą ir funkcijas atsako įrangos montuotojas.

ESAB je testirao jedinicu u operaciji opće namjene.
Odgovornost za sigurnost i funkciju završne operacije ostaje na Integratoru.

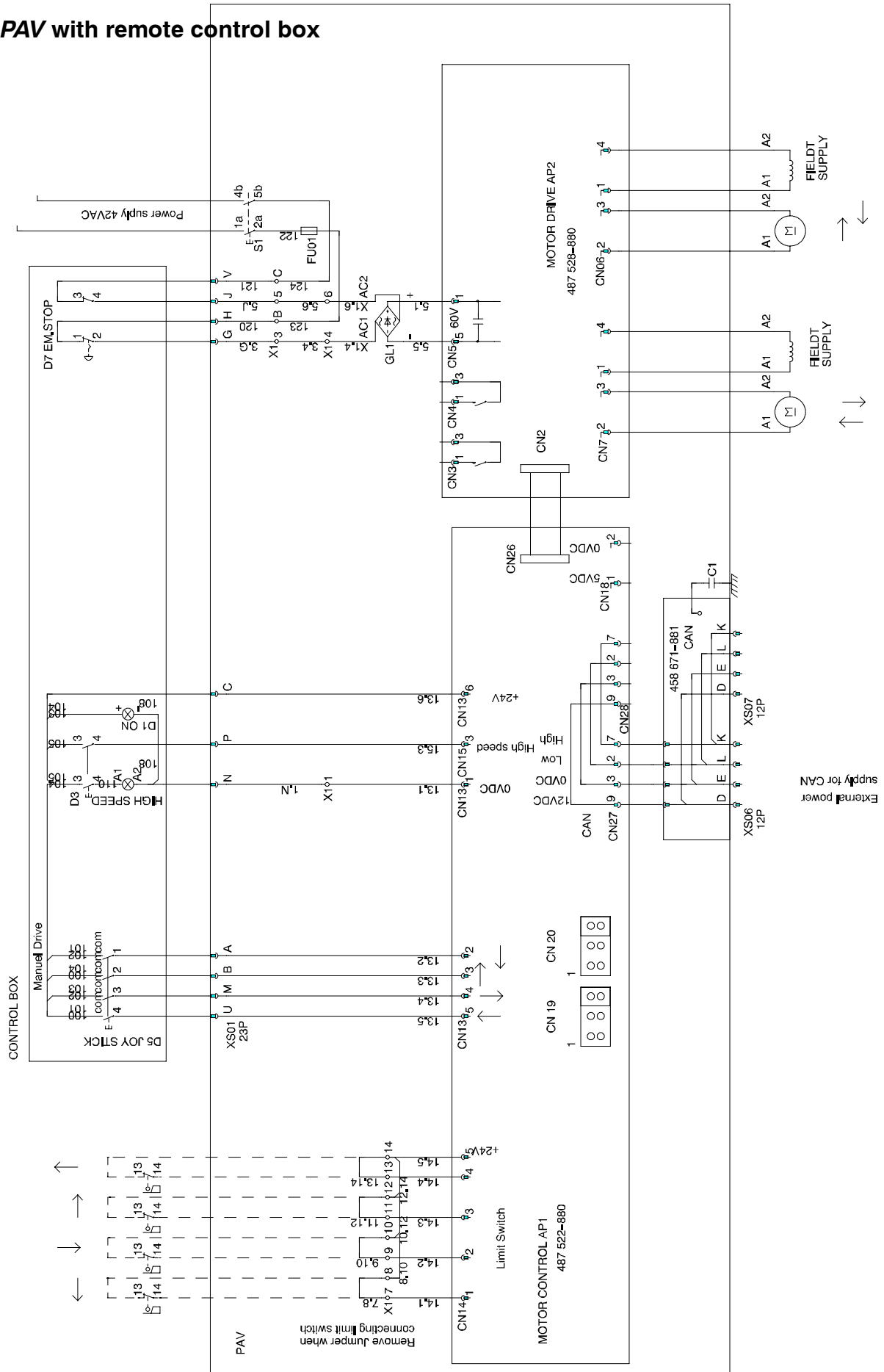
Unitatea este testată de ESAB în timpul funcționării în scop general.
Responsabilitatea pentru siguranță și funcționarea finală este a Integratorului.

SCHEMA SKEMA SKJEMA JOHDOTUSKAAVIO DIAGRAM SCHALT-
 PLAN SCHEMA SCHEMA ESQUEMA SCHEMA ESQUEMA ΣΧΗΜΑ
 ΣΥΝΔΕΣΗΣ SCHEMAT KAPCSOLÁSIRAJZ SCHEMA SCHEMA SHĚMA
 SCHEMA SHEME DIAGRAMA

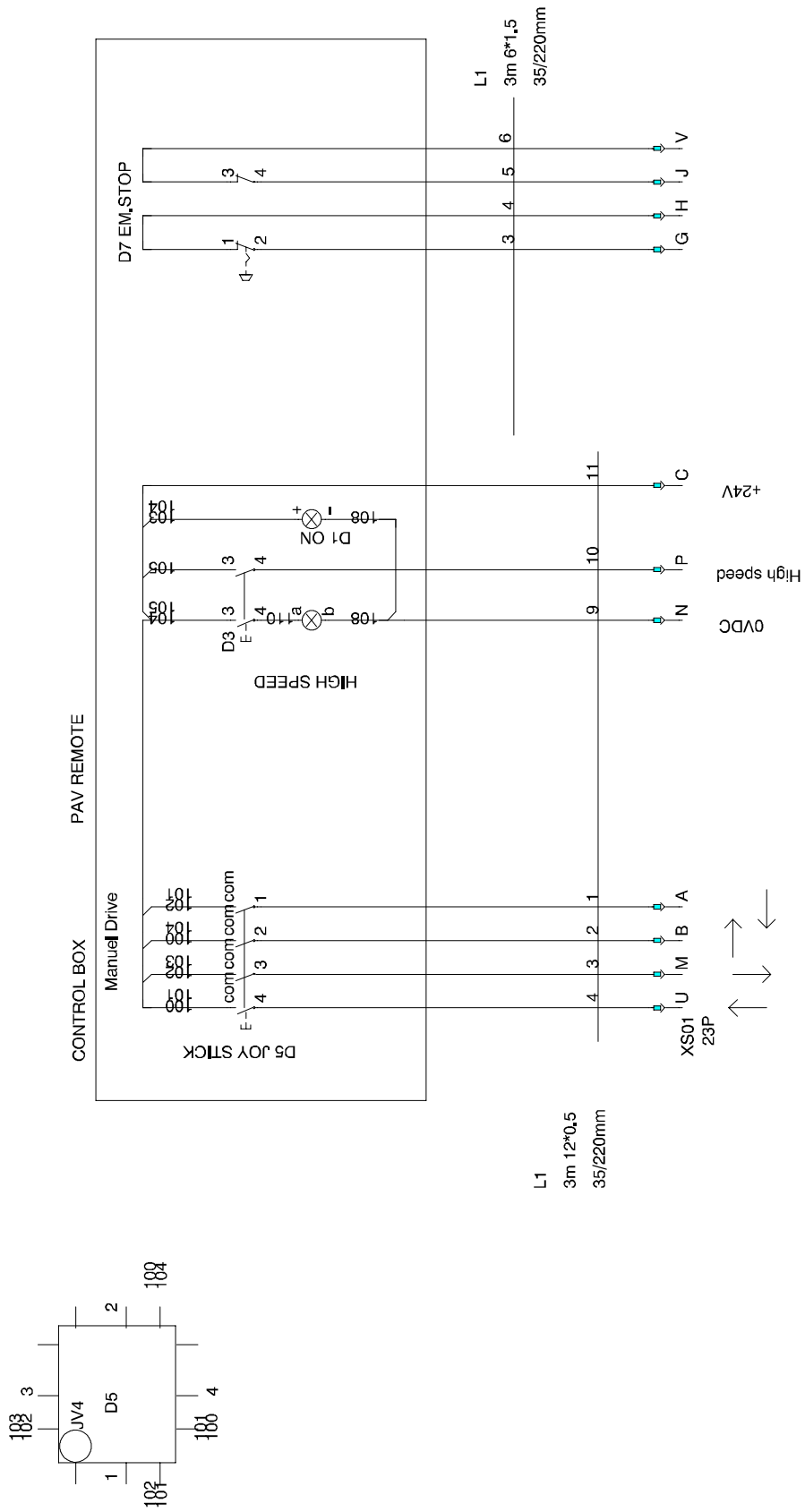
PAV with control panel



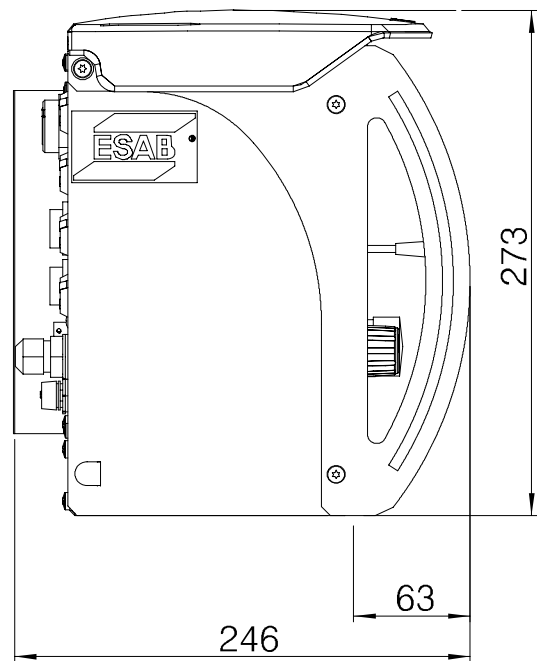
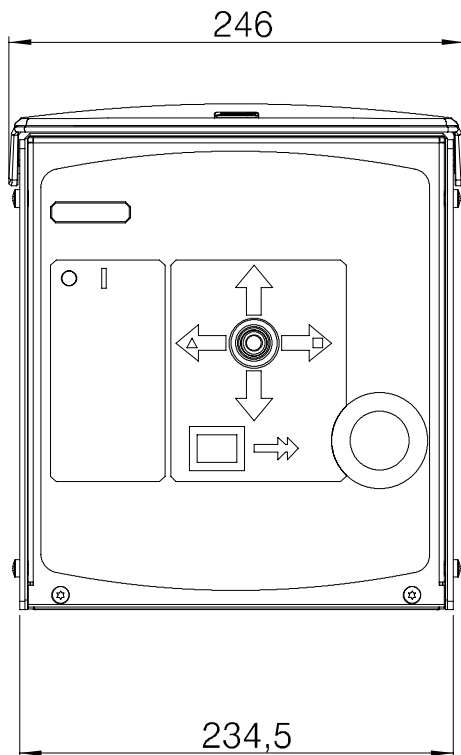
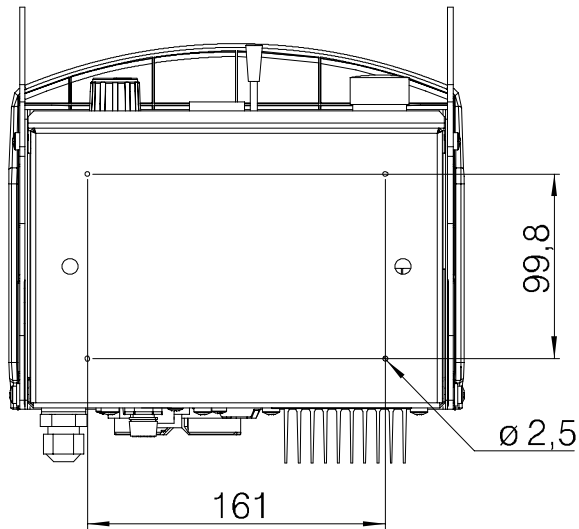
PAV with remote control box



PAV, Remote control box



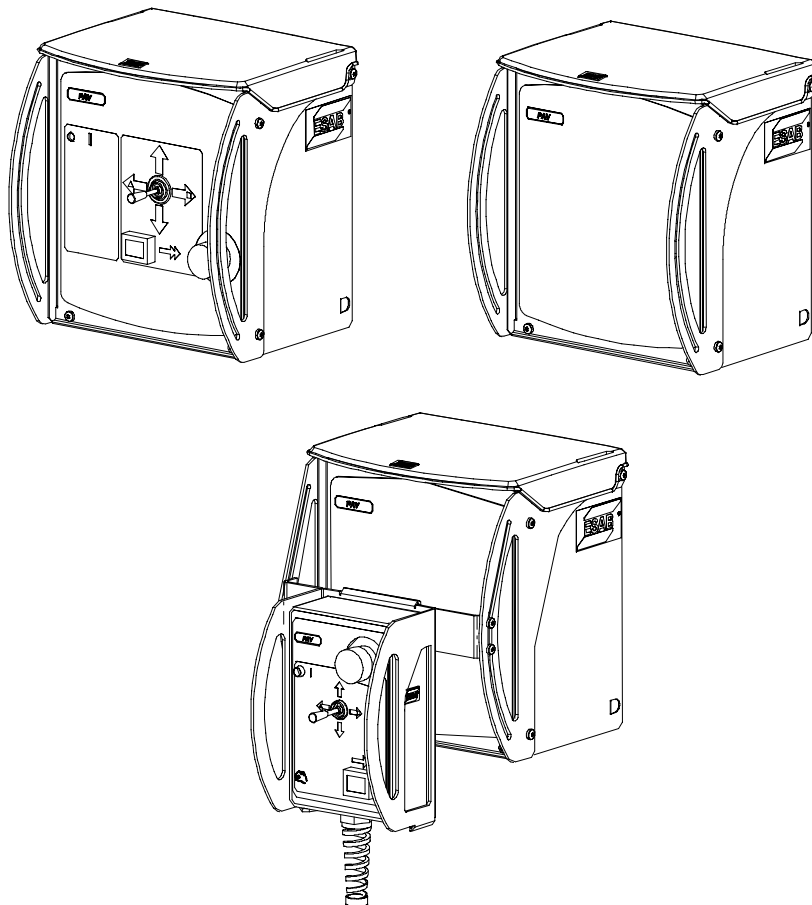
**MÅTTSKISS MÅLSKITSE MÅLSKISSE MITTAPIIRUSTUS DIMENSION
 DRAWING MASSBILD COTES D'ENCOMBREMENT MAATSCHETS CRO-
 QUIS ACOTADO DIMENSIONI ESBOÇO COM DIMENSÕES
 ΣΧΕΔΙΑΡΑΜΜΑ ΜΕΓΕΘΩΝ RYSUNEK WYMIAROWANYMÉRETEZETT RAJZ
 ROZMĚROVÝ VÝKRES ROZMEROVÝ VÝKRES RASĚJUMI AR IZMĚRIEM
 MATMENÜ BRÉŽINYS KOTIRANE NACRTE DESEN DIMENSIONAL**



RESERVDLSFÖRTECKNING RESERVDLSFORTEGNELSE
 RESERVDLSLISTE VARAOSALUETTELO SPARE PARTS LIST ERSATZ-
 TEILLISTE LISTE DE PIÈCES DÉTACHÉES RESERVEONDERDELENLIJST
 LISTA DE REPUESTOS ELENCO RICAMBI LISTA DE PEÇAS SOBRESSALEN-
 TES ΠΙΝΑΚΑΣ ΑΝΤΑΛΛΑΚΤΙΚΩΝ ΜΕΡΩΝ SPIS CZĘŚCI ZAPASOWYCH
 TARTALÉKALKATRÉSZLISTA SEZNAM NÁHRADNÍCH DÍLŮ ZOZNAM
 NÁHRADNÝCH DIELOV REZERVES DAĽU SARAĽSTS ATSARGINIŲ DALIŲ
 SAŖAŠAS POPIS PRIÉUVNIH LISTA DE PIESE DE SCHIMB

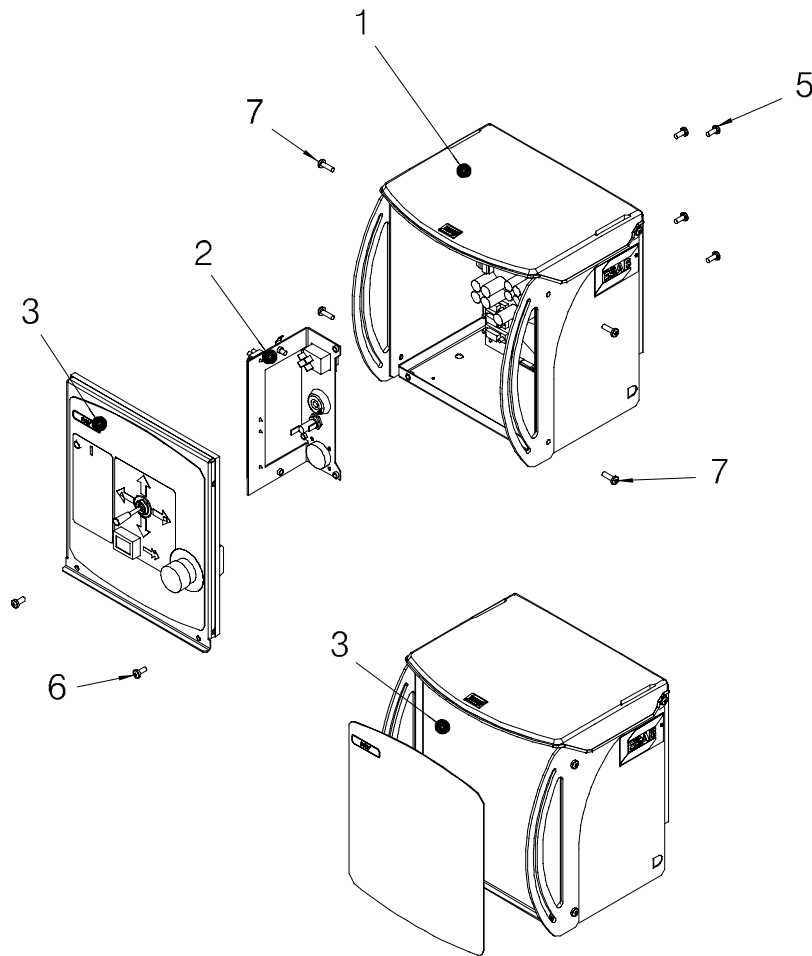
PAV

Edition 2008-11-03

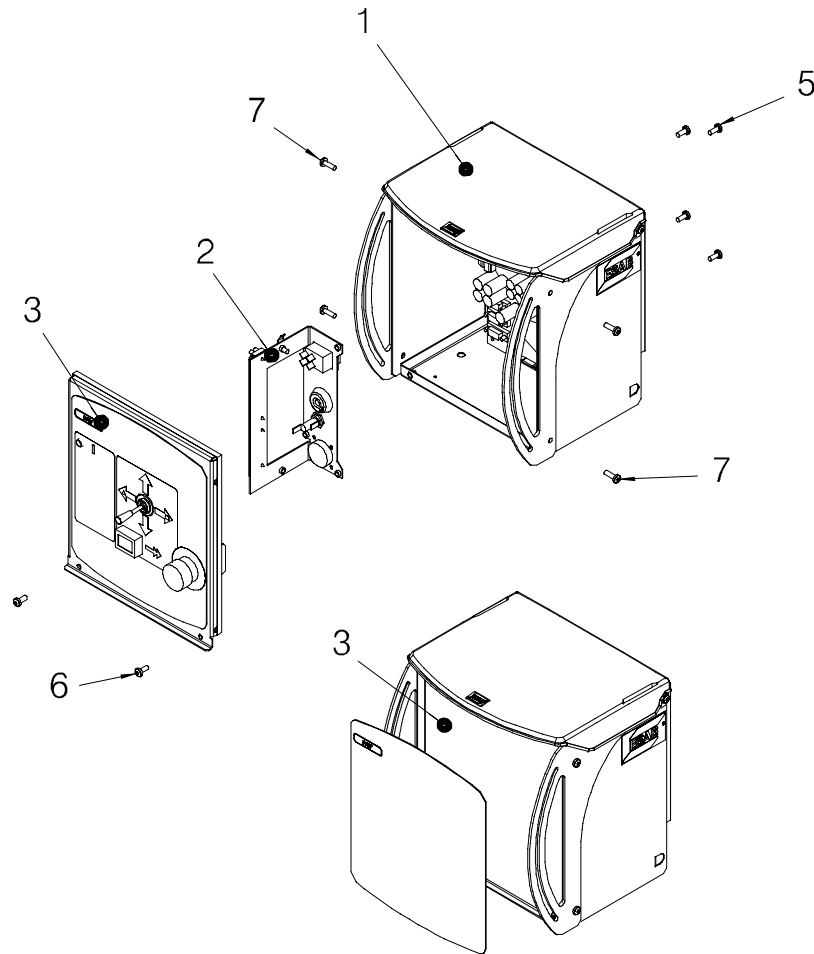


Ordering no.	Denomination	Notes
0460502880	PAV Complete	Joint tracking unit without control panel
0460502881	PAV with MMC Complete	Joint tracking unit with control panel
0460697880	PAV with portable control box	Joint tracking unit without control panel and with portable control box
0460570881	Portable control box	

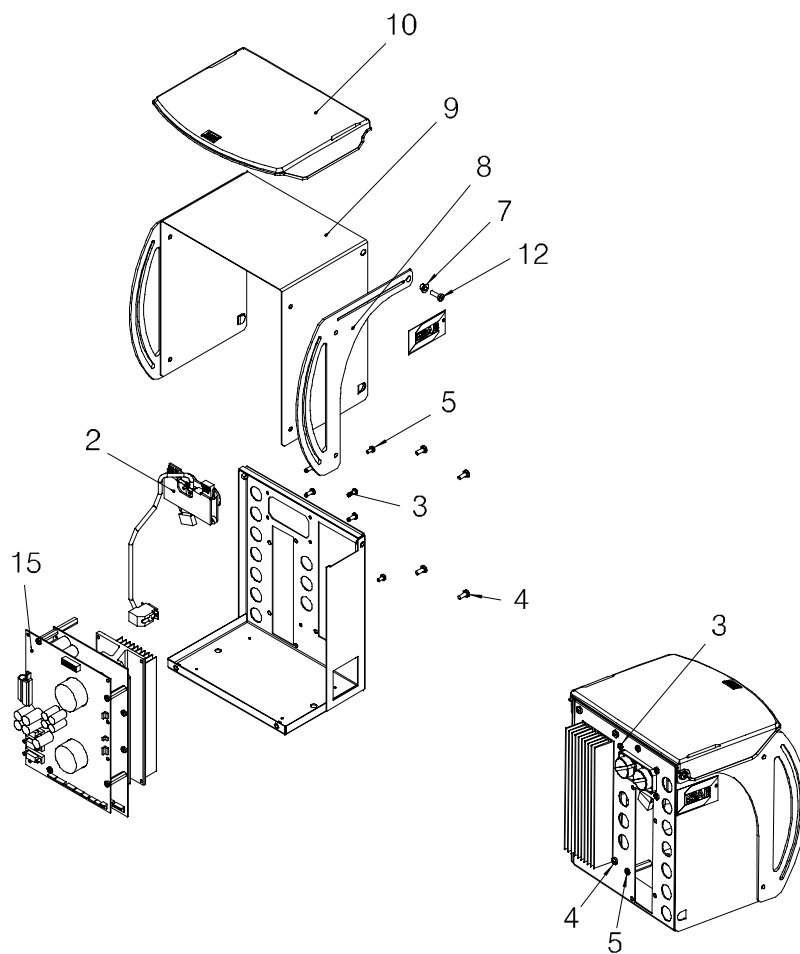
Item no.	Qty	Ordering no.	Denomination	Notes
		0460502880	PAV	Without control panel
1	1	0460468880	Basic module	
2	1	0460470880	Outlet module, PAV remote control	
3	1	0460462880	MMC without controls	
4	7	0194292020	Grommet	Ø20
5	4		Screw MRT, ground-cutter (black)	M5x12
6	2		Screw MRT (black)	M5x12
7	4		Screw MRT (black)	M5x16
12	1	0460673880	Supply cable	



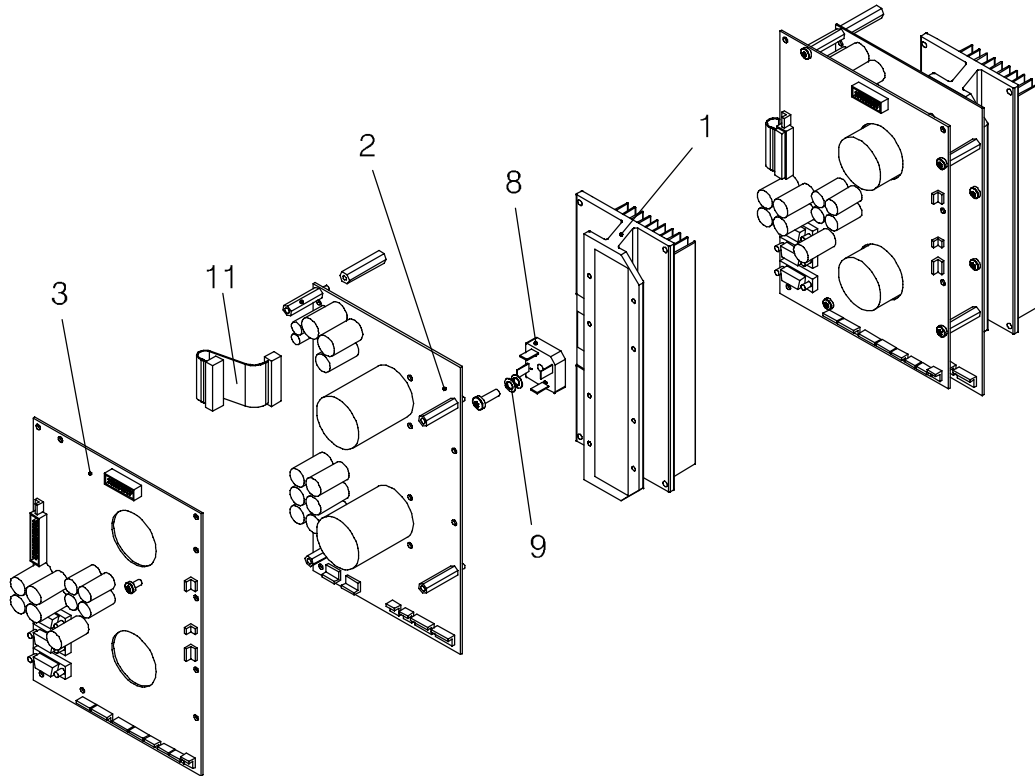
Item no.	Qty	Ordering no.	Denomination	Notes
		0460502881	PAV with MMC	With control panel
1	1	0460468880	Basic module	
2	1	0460470881	Outlet module, PAV remote control	
3	1	0460462881	MMC PAV	
4	7	0194292020	Grommet	Ø20
5	4		Screw MRT, ground-cutter (black)	M5x12
6	2		Screw MRT (black)	M5x12
7	4		Screw MRT (black)	M5x16
12	1	0460673880	Supply cable	



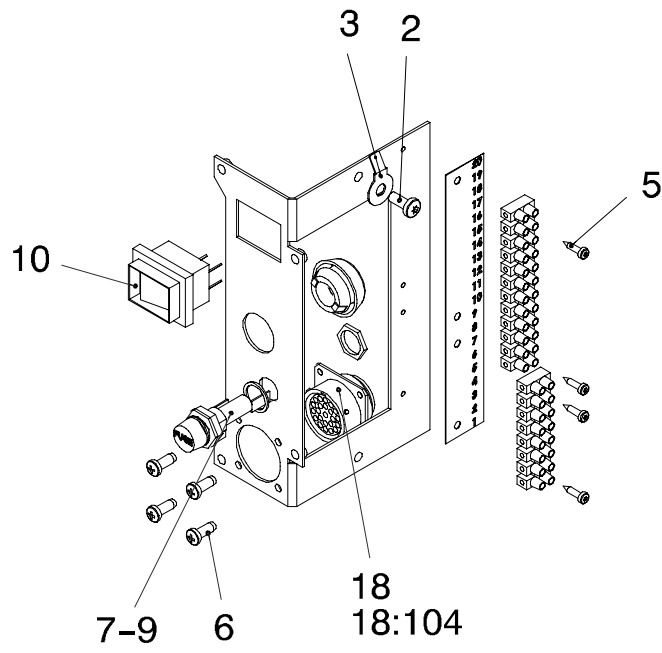
Item no.	Qty	Ordering no.	Denomination	Notes
		0460468880	Basic module	
2	1	0458679885	Operating contact can tractor	
3	4		Screw RX-PT	6-19x8
4	6		Screw MRT ground-cutter	M5x12
5	8		Screw MRT	M4x8, DIN 7985
7	2	0460465001	Spacer hinge	
8	2	0460463001	Protective frame	
9	1	0460430001	Cover	
10	1	0460469001	Sun visor	
12	2		Screw MRT (black)	M5x16
15	1		Circuit board module	



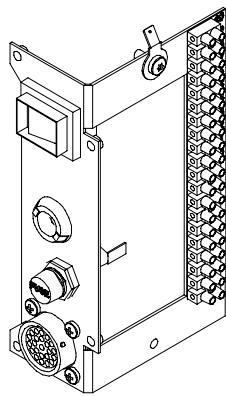
Item no.	Qty	Ordering no.	Denomination	Notes
			Circuit board module	
1	1	0460461001	Heat sink	
2	1	0487528880	PC board, motor drive	
3	1	0487522880	PC board, motor control	PAV
		0487522980	PC board, motor control	PAV
8	1	0460648880	Cable set, rectifier bridge	
9	2		Spring washer	
11	1	0193700703	Ribbon cable+connectors	26-pole



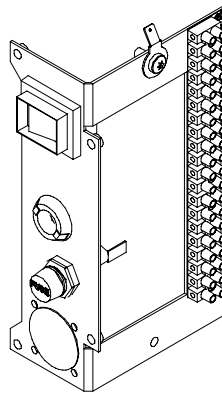
Item no.	Qty	Ordering no.	Denomination	Notes
		0460470880	Outlet module, PAV remote	PAV
1	1	0460431002	Bracket	jog
2	1	0194179327	Screw mrt ground-cutter	m5x12 steel 8.8 fzb
3	1	0191548009	Flat pin	6,3x0,8 m6
4	1	0460652001	Decal terminal	
5	4	0194119178	Screw RTS	st2,9x13 fzb
6	4	0193517277	Screw RX-PT	6- 19x8 stål fzb
7	1	0193701001	Fuse holder	fine.5x12
8	1	0193701002	Fuse holder	5x20
9	1	0567900116	Fuse	10 a
10	1	0193317001	Switch	tigaid 315/lt/lt
12	1	0192230110	Dummy plug	p-812 d=23/20
18	1	0460636880	Cable set pav without MMC	
18:104	1		Sleeve socket, Burndy	23 pole
		0460470881	Outlet module, PAV mmc	PAV
1	1	0460431002	Bracket	jog
2	1	0194179327	Screw mrt ground-cutter	m5x12 steel 8.8 fzb
3	1	0191548009	Flat pin 6	6,3x0,8 m6
4	1	0460652001	Decal terminal	
5	4	0194119178	Screw RTS	st2,9x13 fzb
6	4	0193517277	Screw RX-PT	6- 19x8 stål fzb
7	1	0193701001	Fuse holder	fine.5x12
8	1	0193701002	Fuse holder	5x20
9	1	0567900116	Fuse	10 a
10	1	0193317001	Switch	tigaid 315/lt/lt
12	1	0192230110	Dummy plug	p-812 d=23/20
13	1	0192230114	Dummy plug	p-1187
19	1	0460634880	Cable set pav with MMC	



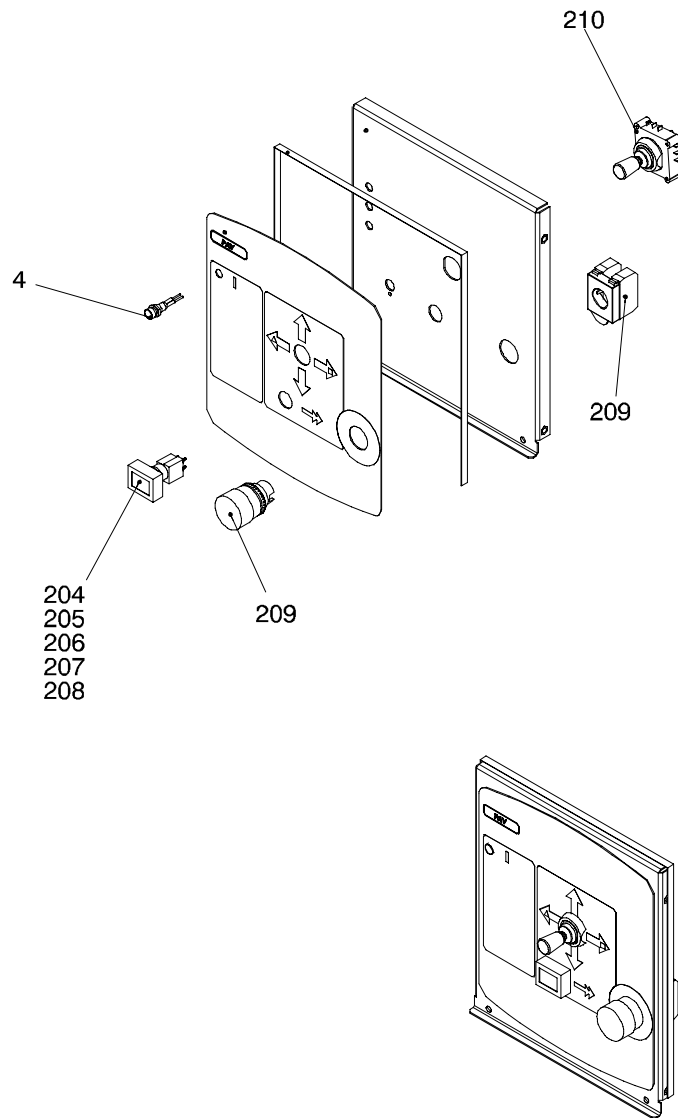
880



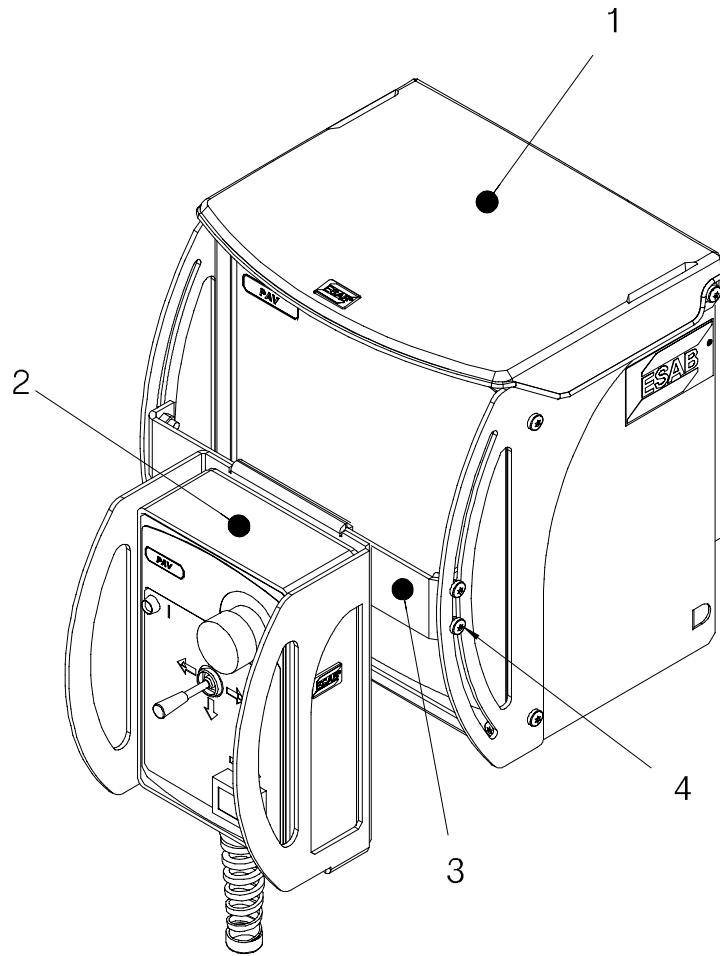
881



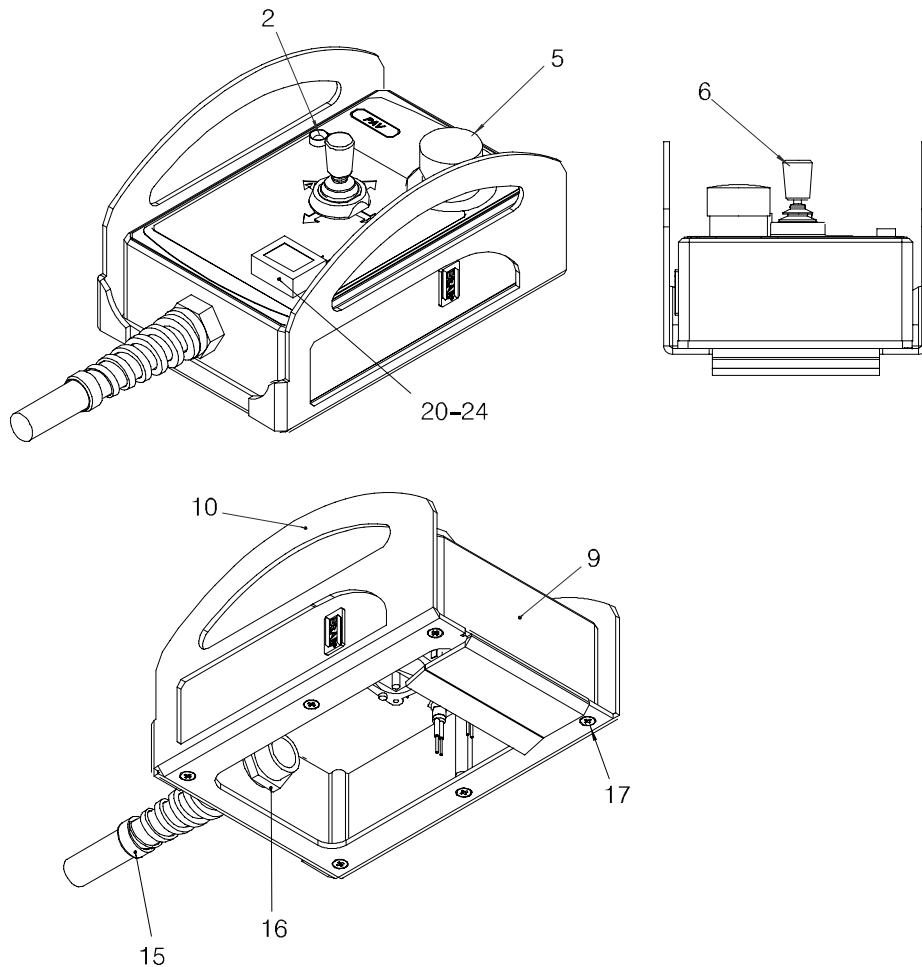
Item no.	Qty	Ordering no.	Denomination	Notes
4	1	0460462881 0194282001	MMC PAV LED (white)	PAV 24 V
201	1	0460635880	Cable set PAV with MMC Wire set pav with mmc	
202	1	0193367112	Connection block	12 polig
203	1	0193367112	Connection block	12 polig
204	2	0415200020	Contact block	1no+1nc
205	1	0415200027	Cap orange	18x24
206	1	0415200001	Pushbutton	18x24
207	1	0415200047	Bulb	14v 80ma
208	1	0415200058	Splash water shield	
209	1	0460424881	Emergency stop	peh
210	1	0460795001	Joystick	



Item no.	Qty	Ordering no.	Denomination	Notes
		0460697880	PAV with portable control box	
1	1	0460502880	PAV without MMC	
2	1	0460570881	Portable control box	
3	1	0460481001	Bracket	
4	4		Screw (Black)	MRT M5x16



Item no.	Qty	Ordering no.	Denomination	Notes
		0460570881	PAV Remote control	
1	1	0460571002	Sign	
2	1	0194282001	Led indicator white	
5	1	0460424881	Emergency stop	peh
6	1	0460795001	Joystick	
9	1	0460599001	Box	
10	1	0460569001	Cover	
11	1	0459184005	Sticker ESAB	13x23mm
14	1	0460632880	Wire set remote	pav/gmh
15	1	0460759880	Remote cable	4m
16	1	0212602202	Nut	pr22,5
17	6	0193509293	Screw	m4x16
20	1	0415200020	Contact block	1no+1nc
21	1	0415200027	Cap orange	18x24
22	1	0415200001	Push button	18x24
23	1	0415200048	Bulb	28V 40mA
24	1	0415200058	Splash water shield	
25	6	0040953601	Panduit strip mec30/	t18r



ESAB subsidiaries and representative offices

Europe

AUSTRIA

ESAB Ges.m.b.H
Vienna-Liesing
Tel: +43 1 888 25 11
Fax: +43 1 888 25 11 85

BELGIUM

S.A. ESAB N.V.
Brussels
Tel: +32 2 745 11 00
Fax: +32 2 745 11 28

THE CZECH REPUBLIC

ESAB VAMBERK s.r.o.
Vamberk
Tel: +420 2 819 40 885
Fax: +420 2 819 40 120

DENMARK

Aktieselskabet ESAB
Herlev
Tel: +45 36 30 01 11
Fax: +45 36 30 40 03

FINLAND

ESAB Oy
Helsinki
Tel: +358 9 547 761
Fax: +358 9 547 77 71

FRANCE

ESAB France S.A.
Cergy Pontoise
Tel: +33 1 30 75 55 00
Fax: +33 1 30 75 55 24

GERMANY

ESAB GmbH
Solingen
Tel: +49 212 298 0
Fax: +49 212 298 218

GREAT BRITAIN

ESAB Group (UK) Ltd
Waltham Cross
Tel: +44 1992 76 85 15
Fax: +44 1992 71 58 03

ESAB Automation Ltd
Andover
Tel: +44 1264 33 22 33
Fax: +44 1264 33 20 74

HUNGARY

ESAB Kft
Budapest
Tel: +36 1 20 44 182
Fax: +36 1 20 44 186

ITALY

ESAB Saldatura S.p.A.
Mesero (Mi)
Tel: +39 02 97 96 81
Fax: +39 02 97 28 91 81

THE NETHERLANDS

ESAB Nederland B.V.
Amersfoort
Tel: +31 33 422 35 55
Fax: +31 33 422 35 44

NORWAY

AS ESAB
Larvik
Tel: +47 33 12 10 00
Fax: +47 33 11 52 03

POLAND

ESAB Sp.zo.o.
Katowice
Tel: +48 32 351 11 00
Fax: +48 32 351 11 20

PORTUGAL

ESAB Lda
Lisbon
Tel: +351 8 310 960
Fax: +351 1 859 1277

SLOVAKIA

ESAB Slovakia s.r.o.
Bratislava
Tel: +421 7 44 88 24 26
Fax: +421 7 44 88 87 41

SPAIN

ESAB Ibérica S.A.
Alcalá de Henares (MADRID)
Tel: +34 91 878 3600
Fax: +34 91 802 3461

SWEDEN

ESAB Sverige AB
Gothenburg
Tel: +46 31 50 95 00
Fax: +46 31 50 92 22

ESAB international AB
Gothenburg
Tel: +46 31 50 90 00
Fax: +46 31 50 93 60

SWITZERLAND

ESAB AG
Dietikon
Tel: +41 1 741 25 25
Fax: +41 1 740 30 55

North and South America

ARGENTINA

CONARCO
Buenos Aires
Tel: +54 11 4 753 4039
Fax: +54 11 4 753 6313

BRAZIL

ESAB S.A.
Contagem-MG
Tel: +55 31 2191 4333
Fax: +55 31 2191 4440

CANADA

ESAB Group Canada Inc.
Mississauga, Ontario
Tel: +1 905 670 02 20
Fax: +1 905 670 48 79

MEXICO

ESAB Mexico S.A.
Monterrey
Tel: +52 8 350 5959
Fax: +52 8 350 7554

USA

ESAB Welding & Cutting Products
Florence, SC
Tel: +1 843 669 44 11
Fax: +1 843 664 57 48

Asia/Pacific

CHINA

Shanghai ESAB A/P
Shanghai
Tel: +86 21 2326 3000
Fax: +86 21 6566 6622

INDIA

ESAB India Ltd
Calcutta
Tel: +91 33 478 45 17
Fax: +91 33 468 18 80

INDONESIA

P.T. ESABindo Pratama
Jakarta
Tel: +62 21 460 0188
Fax: +62 21 461 2929

JAPAN

ESAB Japan
Tokyo
Tel: +81 45 670 7073
Fax: +81 45 670 7001

MALAYSIA

ESAB (Malaysia) Snd Bhd
USJ
Tel: +603 8023 7835
Fax: +603 8023 0225

SINGAPORE

ESAB Asia/Pacific Pte Ltd
Singapore
Tel: +65 6861 43 22
Fax: +65 6861 31 95

SOUTH KOREA

ESAB SeAH Corporation
Kyungnam
Tel: +82 55 269 8170
Fax: +82 55 289 8864

UNITED ARAB EMIRATES

ESAB Middle East FZE
Dubai
Tel: +971 4 887 21 11
Fax: +971 4 887 22 63

Representative offices

BULGARIA

ESAB Representative Office
Sofia
Tel/Fax: +359 2 974 42 88

EGYPT

ESAB Egypt
Dokki-Cairo
Tel: +20 2 390 96 69
Fax: +20 2 393 32 13

ROMANIA

ESAB Representative Office
Bucharest
Tel/Fax: +40 1 322 36 74

RUSSIA

LLC ESAB
Moscow
Tel: +7 095 543 9281
Fax: +7 095 543 9280

LLC ESAB

St Petersburg
Tel: +7 812 336 7080
Fax: +7 812 336 7060

Distributors

For addresses and phone numbers to our distributors in other countries, please visit our home page

www.esab.com



ESAB AB
SE-695 81 LAXÅ
SWEDEN
Phone +46 584 81 000

www.esab.com

